




Q2 Impact Report (October – December 2019)

PRELIMINARY RESULTS

REVEAL REDUCTION IN U5 MORTALITY

Integrate Health is thrilled to share preliminary data showing an impressive reduction in under-five mortality across four communities where Integrate Health piloted the Integrated Primary Care program from 2015 to 2019. Data from a repeated cross-sectional study, conducted in partnership with the Togolese Ministry of Health, revealed an under-five mortality rate of  deaths per 1,000 live births at baseline and a rate of  deaths per 1,000 live births in 2019, following four years of program implementation. This represents a  reduction of the under-five mortality rate with the 2019 rate falling below the UN Sustainable Development Goal target of 25 deaths per 1,000 live births.

Integrate Health is currently completing data analysis for this study and will submit final results for publication this quarter. Integrate Health, in partnership with the Togolese Ministry of Health, has also launched a second study, which employs a stepped-wedge design, to measure changes in the under-five mortality rate for an additional population of 200,000 across 21 communities between 2018 and 2022.

The following report describes additional progress made over the past three months, including successes and challenges, as well as outputs, outcomes, and funding metrics. Please let us know if you have any questions. Thank you for your support.





Catchment Population
142,472



Clinics
13



Community Health Workers (CHWs)
95

OUTPUT INDICATORS



Q2 ACTUALS **35,658**
Q2 TARGET **43,368** Home Visits



Q2 ACTUALS **827**
Q2 TARGET **715** Facility-Based Deliveries



Q2 ACTUALS **26,660**
Q2 TARGET **19,994** Consultations of Children Under-Five



Q2 ACTUALS **63**
Q2 TARGET **40** Women Enrolled in Prevention of Mother-Child Transmission



Q2 ACTUALS **799**
Q2 TARGET **512** Women Started on Family Planning

OUTCOME INDICATORS

54%

Facility-Based Delivery Coverage
(% of women who deliver at a health facility, out of estimated number of deliveries)

(TARGET: 51%)

23%

Contraceptive Coverage Rate
(% of women effectively protected by a modern FP method, out of eligible women)

(TARGET: 14%)

45%

Prenatal Consultation Coverage
(% of women receiving four prenatal consultations before delivery)

(TARGET: 40%)

96%

Timeliness
(% of cases of childhood illnesses treated within 72 hours of symptom onset)

(TARGET: 85%)

/1000

Under-Five Mortality Rate
(Down from [REDACTED] at baseline following four years of program implementation)

(TARGET: 25/1000)

Child Health Coverage is an annual indicator and it will be reported in Q4 FY2020

Child Health Coverage
(% of children under-five consulted by a CHW or in Clinic)

(TARGET: 95%)

PROGRAM HIGHLIGHTS

Successes

- This quarter 33 Community Health Workers from the Dankpen district were newly trained in family planning. With the aim of transitioning program implementation to local ownership, for the first time this training was led by the District Health Office of the Ministry of Health with the Integrate Health program team providing support. Following the training, the Community Health Workers completed a month-long internship under the supervision of healthcare providers at each health center. Integrate Health was pleased with the success of the training and plans to incorporate these changes into all trainings moving forward.
- Renovations of four clinics in the Bassar district began, in partnership with Construction for Change and the 30/30 Project. The Construction for Change team alongside engineers from the Ministry of Health, visited each site to solidify construction plans. After hiring a contractor, the construction officially launched across all sites in December.

Challenges

- Integrate Health has noticed a high rate of home-based deliveries since launching in the Dankpen district in July 2019. Upon investigation, the program team discovered that to visit the clinics, pregnant women need to cross a river, that by traditional customs, is thought to cause harm to pregnancy. To address this concern, Integrate Health trained Community Health Workers, in partnership with health center staff and community leaders, to share key messages with pregnant women and their partners to help explain the risk of home-based deliveries. We are exploring additional options to make the journey easier.

EXPANSION HIGHLIGHTS

Successes

- The Togolese Ministry of Health validated a new National Health Quality Assurance Policy in November. A few weeks later Dr. Baba, Director of Health Facilities within the Ministry of Health, conducted a site visit to Kara to learn about Integrate Health's clinical mentorship approach and explore adaptation of this approach and the tools used for quality assurance. Integrate Health continues to support the Ministry of Health on development of the implementation plan for the new national policy.
- Integrate Health is pleased to announce that the Kéran district was randomly selected to be the next district for implementation of the expansion of the Integrated Primary Care Program! The Integrate Health program team will now begin preparations for a July 2020 program launch in the Kéran district, which will bring the total population served to 200,000 across 18 clinics with 142 Community Health Workers.

Challenges

- The Togolese Ministry of Health is currently supporting multiple mHealth pilots with various funders and partners that use competing technologies. Integrate Health is working to understand the vision of the Ministry of Health and its partners. We hope to help facilitate a process where the mHealth strategy and tool selection is clearly articulated. We will align our efforts in the mHealth space with that of the Ministry of Health and key partners.



ORGANIZATIONAL HIGHLIGHTS

Successes

- The [2018 990](#) and [Independent Financial Audit](#) of Integrate Health have been finalized. The auditors found no weaknesses or deficiencies, and only noted a few observations for improvement. Integrate Health's CEO, COO, and Finance Manager will address any observations immediately.
- Integrate Health published a protocol manuscript for its Phase Two study in the journal Implementation Science. Entitled "[Assessing the Integrated Community-Based Health Systems Strengthening initiative in northern Togo: a pragmatic effectiveness-implementation study protocol](#)," this study will generate knowledge to improve delivery of high-quality healthcare services to our current population of over 140,000 in northern Togo and ultimately help inform national-scale strategies.
- This quarter, Integrate Health is happy to welcome two new team members: a new [Communications Associate \(US\)](#) and [MEQI Associate \(Togo\)](#). Integrate Health is still recruiting for a Deputy Country Director and Logistics Assistant, both to be based in Togo.

Challenges

- Although 70% of Integrate Health staff are women, it has been difficult to recruit women for in-country positions, especially senior positions. Integrate Health is working on a strategy to address this challenge and hopes to be able to both recruit and promote more women into leadership positions.

FINANCIAL HIGHLIGHTS

Successes

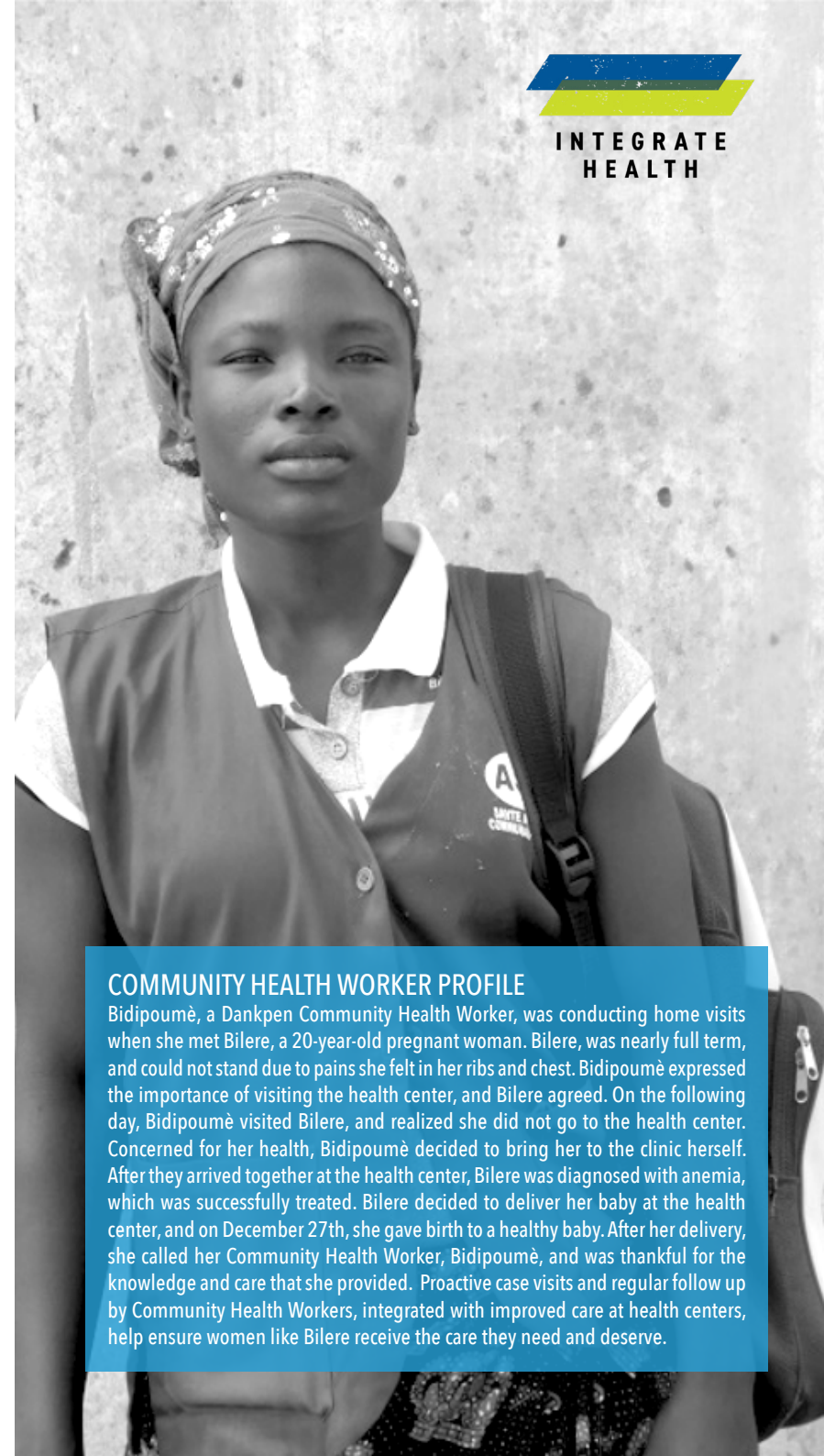
- Integrate Health received renewal funding from 13 existing partners, funding from three new partners and has three pending applications this quarter.

Challenges

- An application to Conservation, Food, and Health Foundation was not accepted.

FUNDING SNAPSHOT

METRIC	RESULT	NOTES
Three-Year Funding Need	\$14M	Fiscal Years '20, '21, '22
FY20 Projected Expenses	\$4.2M	
Current Funding Runway	9 Months	6 Months Operating + 3 Months Reserve



COMMUNITY HEALTH WORKER PROFILE

Bidipoumè, a Dankpen Community Health Worker, was conducting home visits when she met Bilere, a 20-year-old pregnant woman. Bilere, was nearly full term, and could not stand due to pains she felt in her ribs and chest. Bidipoumè expressed the importance of visiting the health center, and Bilere agreed. On the following day, Bidipoumè visited Bilere, and realized she did not go to the health center. Concerned for her health, Bidipoumè decided to bring her to the clinic herself. After they arrived together at the health center, Bilere was diagnosed with anemia, which was successfully treated. Bilere decided to deliver her baby at the health center, and on December 27th, she gave birth to a healthy baby. After her delivery, she called her Community Health Worker, Bidipoumè, and was thankful for the knowledge and care that she provided. Proactive case visits and regular follow up by Community Health Workers, integrated with improved care at health centers, help ensure women like Bilere receive the care they need and deserve.